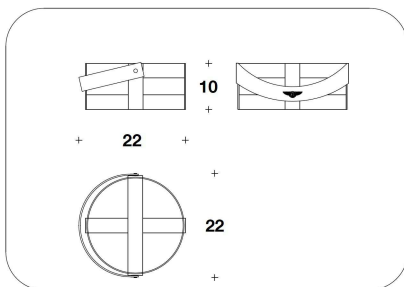


**DESCRIZIONE TECNICA / TECHNICAL DESCRIPTION**

**MATERIALE** Set composto da nr.3 vasi-lanternia in vetro soffiato con cinghie in pelle

Logo impresso a caldo su maniglia

**MATERIAL** Set composed by 3 vase-lanterns in blown glass, with leather belts  
Printed logo on the handles

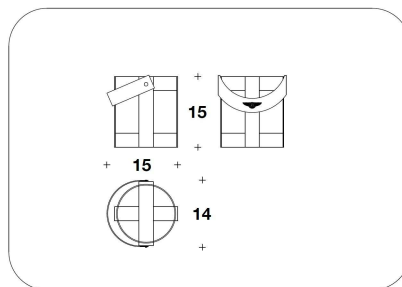


VAB (22)

SET : VASI-LANTERNE / LANTERNS-  
VASES

22x22x10H. - 15x14x15H. -

21x20x20H.cm

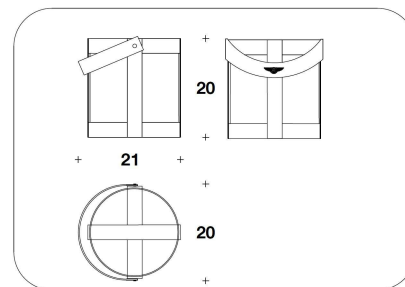
8 3/4x8 3/4x4H. - 6x5 2/4x6H. - 8 1/4x7  
3/4x7 3/4H"

VAB (22)

SET : VASI-LANTERNE / LANTERNS-  
VASES

22x22x10H. - 15x14x15H. -

21x20x20H.cm

8 3/4x8 3/4x4H. - 6x5 2/4x6H. - 8 1/4x7  
3/4x7 3/4H"

VAB (22)

SET : VASI-LANTERNE / LANTERNS-  
VASES

22x22x10H. - 15x14x15H. -

21x20x20H.cm

8 3/4x8 3/4x4H. - 6x5 2/4x6H. - 8 1/4x7  
3/4x7 3/4H"**Note**